

2.4ghz Radio Controlled Excavator Electric Remote Control Toy Car 22CH

Our Product Introduction

for more products please visit us on lohuite.com

Basic Information

- Place of Origin: Guangdong, China
- Brand Name: HUINA
- Model Number: 1592
- Minimum Order Quantity: 2 units
- Price: \$38.50 - \$43.50/units
- Packaging Details: ORIGINAL WINDOW BOX for Huina 1592
- Supply Ability: 100000 Piece/Pieces per Week Huina 1592

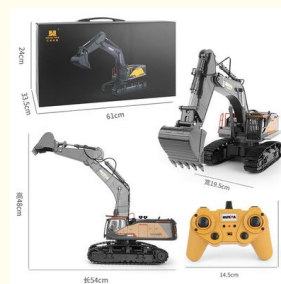


Product Specification

- Product Name: Huina 1592
- Color: Gold
- Description: 1:14 Big RC Trucks
- Feature: Simulation Excavator
- Remote Control: 2.4ghz
- Channel: 22CH
- Truck Battery: 7.2V 1200mAh Rechargeable Battery Pack(Included)
- Working Time: About 30mins
- Control Distance: About 30-50m
- OEM/ODM: Welcome
- Type: Truck
- Power: Battery
- Material: Plastic
- Plastic Type: ABS



More Images



Product Description

Huina 1592 RC Excavator 2.4G 1:14 Big RC Trucks Simulation Excavator 22CH Vehicle Model Hobby Toys For Boys with Alloy Bucket

Descriptions

Brand: HuiNa Toys
Model: 1592 RC excavator
Proportional: 1/14
Transmitter frequency: 2.4G
Battery for Car: 7.2V 1200mAh Rechargeable Battery Pack(Included)
Battery for Transmitter: 2 x 1.5V AA Batteries(No Included)
Running time: About 30mins
Charging time: 120mins
Control distance: About 30-50m
Product size: 66.1*33.2*23.6cm

Function

Turn frontward and backward, turn left and right. The big arm rise and down. The small arm rise and down. The excavator bucket rise and down. Rotate 680 degrees. The lamp before and after light up with simulation sound. Joint activities independently.

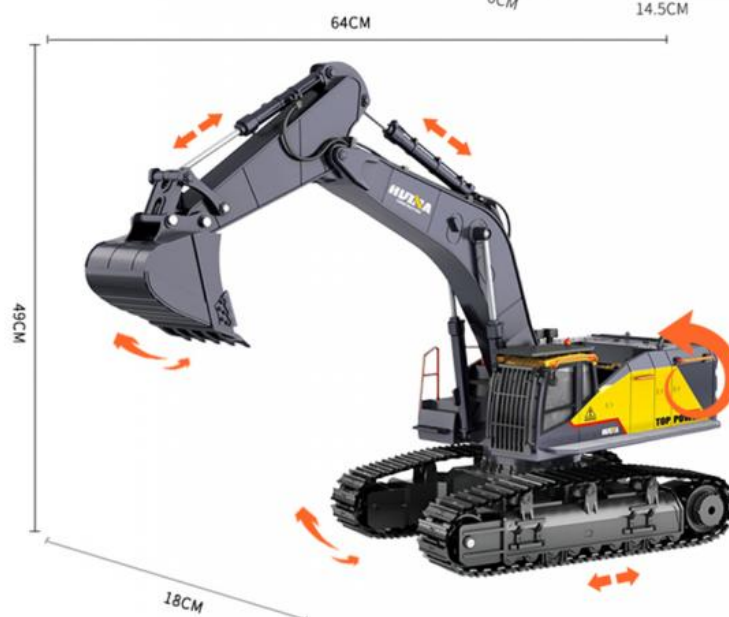
Package Included:

1 x Truck; 1 x Remote Controller; 1 x Battery; 1 x USB Charger

Huina 1592



1:14 22CH Excavator Size:











Packaging & Shipping

Packing: One Set Per Giftbox (window box)

Shipping: Goods can be sent within 3-5 working days after payment or deposit received
Shipping way: Sea shipment, Air shipment, Express shipment



Our Services

Design Service:

We can provide OEM/ODM service. We also cooperate with famous brand, such as Disney, Walmart and Gearbest and so on. If you have any needs for your new product or wish to make further improvements, we are here to offer support.

Product Sampling:

One of the biggest worries when purchasing from a Chinese supplier, especially for the first time. Our samples procedure takes away your worry.

Quality Control:

We have experienced and strict QC team to control the quality. To guarantee high-quality products sent to our customers.

Delivery:

We can arrange sea shipment, air shipment, express shipment for you. Or you can also appoint your own forwarder, we deliver goods to your forwarder, and help them to arrange shipment for you.

Accept print customer logo and make packing:

We will prepare artwork for visual confirmation, and next we will produce a real sample for your final confirmation. If sample confirmed ok, then we will go to mass production.

Company Information

HOSHI electronic technology Co., Ltd., a professional manufacturer for quadcopter, helicopter, toys and gopro accessories. We have our own factory, warehouses, D&R department. We can provide OEM & ODM service. We are here looking forward to cooperating with you!

Factory & Warehouse



FAQ

1. When can I get the quotation?

We usually quote within 24 hours after we get your inquiry. If you are very urgent to get the price, please call us or tell us in your email so that we will regard your inquiry priority display.

2. How can we know the product quality?

We suggest you to order a sample. Also, you can send us email for detail photos for checking if you cannot get enough information in the product page.

3. Can you offer OEM/ODM service?

YES. The OEM/ODM is welcomed, we can printing any logo on the sample as your required.

4. How long can I expect to get the sample?

After you pay the sample charge and send us confirmed files, the samples will be ready within 3 working days. The samples will be sent to you via express and arrive in 3-5 days. You can use your own express account or prepay us if you do not have an account.

5. What about the lead time for mass production?

Honestly, it depends on the order quantity and the season you place the order. Generally speaking, we suggest that you start inquiry two months before the date you would like to get the products at your country.

6. How can I send inquiry?

When you find something you are interested, you can click "chat now", or you can leave your information to us.

7. What is your payment?

We usually accept payment based on L/C, T/T, Western Union, PayPal, Alipay, Escrow, and Money Gram. It's negotiable





Shenzhen Lohuite Technology Co., Ltd.



15007080727



shenzhen@longyun.xyz



lohuite.com

4105, Unit 1, Building B, No. 999 Meilong Avenue, Jingxin Community, Longhua Street, Longhua District,
Shenzhen